

DAB SERIES Outdoor Lighting

DAB-C25-50-100W-MCTP-BK
23" DESIGNER AREA BELL LIGHT SYSTEM

MCTP Multi Color Temperature & Multi Power/Wattage (Selectable)



Ideal for airports, auto dealerships, corporate offices, education, government, healthcare, industrial warehouses, municipal parking, gas stations, convenient stores, recreation and public venues, restaurants, hospitality, retail and grocery stores.

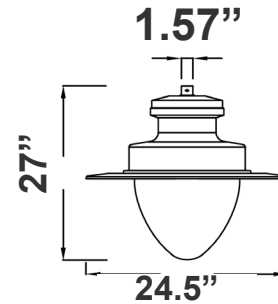
WESTGATE
THE FUTURE IS HERE...AND IT'S QUITE BRIGHT!

Customer Name: _____

Project Name: _____

Note: _____

Type: _____



1.57"(W) x 27"(H) x 24.5"(D)

Features

- AL1060 Aluminum Hosing, Outdoor Powder Coating
- 7-Year Warranty
- Multi CCT and Power: Selectable Switch Inside Of The Fixture

Technical Specifications

Electrical:

- Voltage: 100-277V AC 50/60Hz
- Wattage: 50W/80W/100W
- Power Factor: 0.9
- THD<20%
- Efficacy: 140LM/W

Mechanical:

- AL1060 Aluminum Hosing, Outdoor Powder Coating
- Photocell Included (With Disconnect Switch) Twist-Lock Zhaga Socket Pre-Installed. See Motion
- Sensor Accessories.
- 6' SJTW 18,3 AWG Power Cable
- 6' SJTW Dimming Cable
- Aluminum LED board: High Conductive, Waterproof, Aging Resistance, Salt eResistance
- Operating Temperature: -40°F~104°F
- IP Rating: IP66, Suitable for Wet Locations
- 7-Year Warranty

Lighting:

- Multi CCT and Power: Selectable Switch Inside Of The Fixture
- Dimmable: 0~10V Dimming
- Lens: High Light Transmittance PC, anti-UV and Fire Resistant
- LED: Lumileds 2835
- Total Lumens: 14000LM Max.
- Color Temperature: 3000K/4000K/5000K
- Color Rendering index: >70
- Beam Angle: Type V (150° X 150°)
- Lifespan: 70000 Hrs.

Applications:

- Ideal For Garden, Amusement Park, Residential Quater , Industrial Park And Pedestrian street.

Other Models:

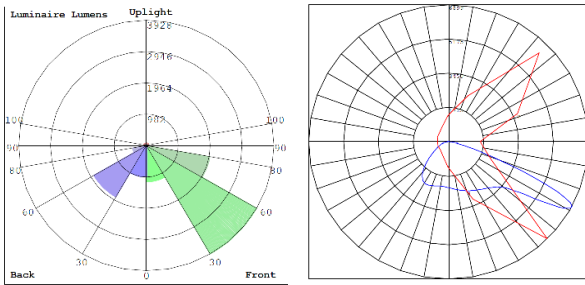
- 100W | 13000LM | DAB-A16-50-100W-MCTP-SR
- 100W | 13000LM | DAB-B20-50-100W-MCTP-SR



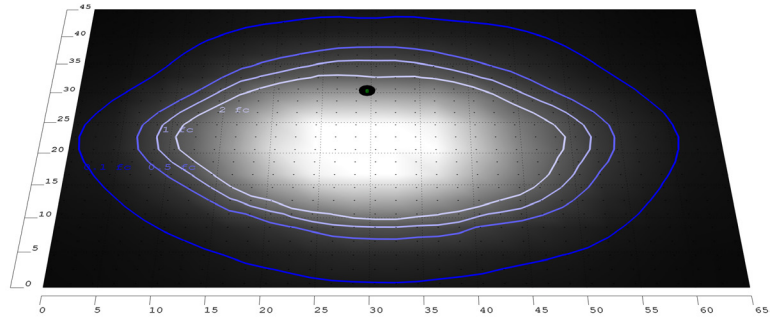
Phone: (877) 805-2252 | Fax: (877) 805-2252
www.westgatemfg.com



Photometrics: DAB-C25-50-100W-MCP-BK



BUD Rating: B3-U0-G2



80W 5000K, Area 45'x 65' Mounting Height: 9'

Performance Table: DAB-C25-50-100W-MCP-BK

MODEL NO.	Wattage	Voltage	Lumens	Color Temp.	BUG Rating	LPW
DAB-C25-50-100W-MCP-BK	50W 80W 100W	120-277V	7000LM 11200LM 14000LM	3000K 4000K 5000K	B3-U0-G2	140

Sample Ordering

Model	Size	Watt	Max. Watt	Color Temp.	Finish
DAB	B25	50	100W	MCTP	BK

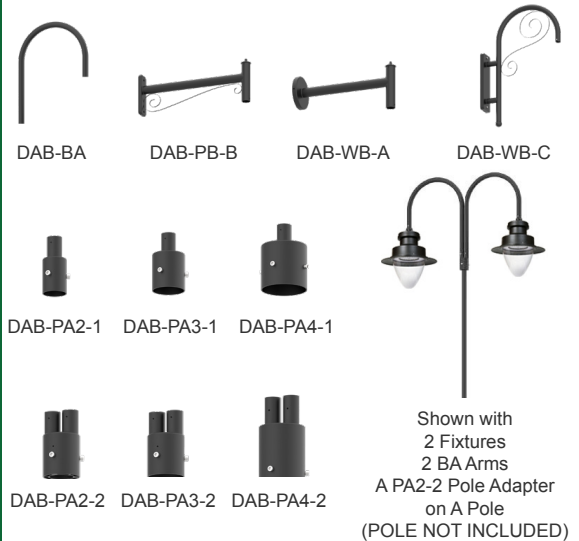
Accessories:

Blank = No Option
DAB-BA = DAB BELL ARM FOR MOUNTING ON SINGLE OR DOUBLE POLE ADAPTER, BLACK
DAB-PB-B = DAB DECORATIVE STRAIGHT POLE BRACKET MODEL B, FOR FLAT OR ROUND POLES, BLACK
DAB-WB-A = DAB STRAIGHT WALL BRACKET MODEL A, BLACK
DAB-PA2-1 = DAB 2in POLE ADAPTER FOR 1 BELL ARM, BLACK
DAB-PA2-2 = DAB 2in POLE ADAPTER FOR 2 BELL ARM, BLACK
DAB-PA3-1 = DAB 3in POLE ADAPTER FOR 1 BELL ARM, BLACK
DAB-PA3-2 = DAB 3in POLE ADAPTER FOR 2 BELL ARM, BLACK
DAB-PA4-1 = DAB 4in POLE ADAPTER FOR 1 BELL ARM, BLACK
DAB-PA4-2 = DAB 4in POLE ADAPTER FOR 2 BELL ARM, BLACK
DAB-WB-C = DAB BENT DECORATIVE WALL BRACKET MODEL C, BLACK
WEC-3MR-72-TLB-BK = 600W Max, ZHAGA 12-24VDC PIR SENSOR, BLACK, WITH BASE (OPTIONAL REMOTE CONTROL WEC-3RC)
WEC-3MBT-72-TLB-BK = 600W Max, ZHAGA 12-24VDC PIR SENSOR, BLACK, WITH BASE (OPTIONAL REMOTE CONTROL WEC-3RC)

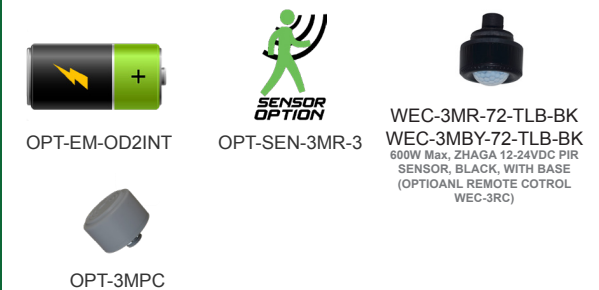
Factory Installed Options:

Blank = No Option
OPT-EM-OD2INT = INTERNAL EMERGENCY BACK UP BATTERY
OPT-3MPC = MICROWAVE PHOTOCELL
OPT-CLR-95(BK/GR/SR/WH) = COLOR PAINT

ACCESSORIES:



FACTORY INSTALLED OPTIONS:



ACCESSORIES:



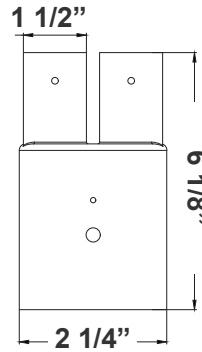
**DAB-BA
DAB-PA2-2**
2in POLE + 23in fixture
(double)



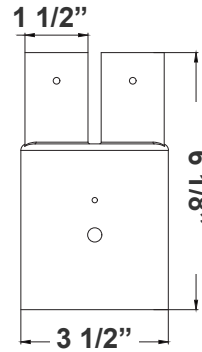
**DAB-BA
DAB-PA3-2**
3in POLE + 23in fixture
(double)



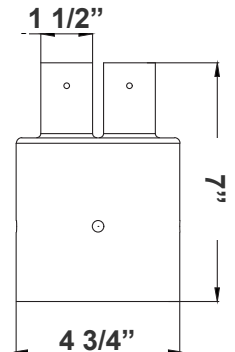
**DAB-BA
DAB-PA4-2**
4in POLE + 23in fixture
(double)



DAB-PA2-2
2 1/4"(W) x 6 1/8"(H)



DAB-PA3-2
3 1/2"(W) x 6 1/8"(H)



DAB-PA4-2
4 3/4"(W) x 7"(H)



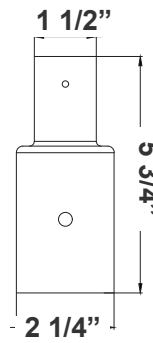
**DAB-BA
DAB-PA2-1**
2in POLE + 23in fixture



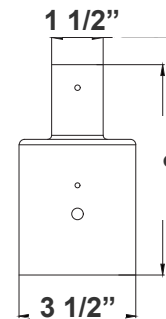
**DAB-BA
DAB-PA3-1**
3in POLE + 23in fixture



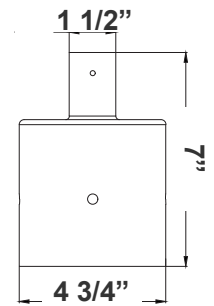
**DAB-BA
DAB-PA4-1**
4in POLE + 23in fixture



DAB-PA2-1
2 1/4"(W) x 5 3/4"(H)



DAB-PA3-1
3 1/2"(W) x 6"(H)



DAB-PA4-1
4 3/4"(W) x 7"(H)



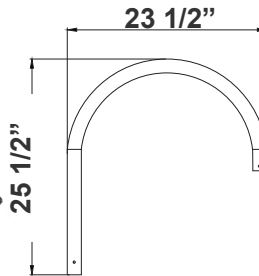
DAB-BA
2in POLE + 23in fixture head



DAB-BA
3in POLE + 23in fixture head



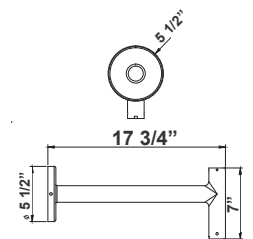
DAB-BA
4in POLE + 23in fixture head



DAB-BA
23 1/2"(W) x 25 1/2"(H)



DAB-WB-A
DAB-WB-A+23in fixture
for wall



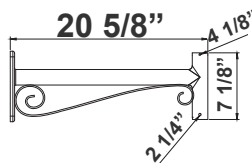
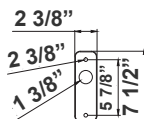
DAB-WB-A
17 3/4"(W) x 7"(H) x 5 1/2"(D)



DAB-PB-B
DAB-PB-B+23in fixture
for pole



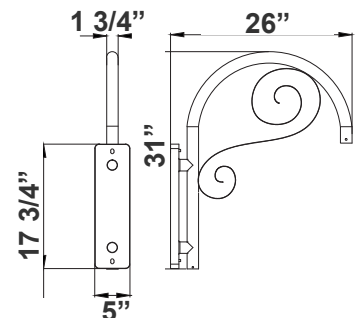
DAB-PB-B
DAB-PB-B+23in fixture
(double)
for pole



DAB-PB-B
20 5/8"(W) x 7 1/2"(H)



DAB-WB-C
DAB-WB-C+23in fixture
for wall





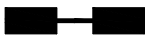
DAB-WB-C
26"(W) x 31"(H) x 5"(D)



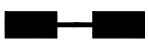
*Decorative Arms & Poles Available Per Job Spec



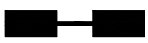


EPA Rating:

EPA of DAB Series

The height of the pole DAB-A16-50-100W- MCTP-SR	10'	12'	14'	16'	18'	20'
		4	4.47	4.94	5.41	5.88
	3.49	3.96	4.43	4.9	5.37	5.84
	5.6	6.07	6.54	7.01	7.48	7.95

The height of the pole DAB-B20-50-100W- MCTP-SR	10'	12'	14'	16'	18'	20'
		4.13	4.6	5.07	5.54	6.01
	3.56	4.03	5.5	5.97	6.44	6.91
	5.86	6.33	6.8	7.27	7.74	8.21

The height of the pole DAB-B23-80-150W- MCTP-SR	10'	12'	14'	16'	18'	20'
		4.54	5.01	5.48	5.95	6.42
	3.91	4.38	4.85	5.32	5.79	6.26
	6.74	7.21	7.68	8.15	8.62	9.09



COLOR CHART: * Choose from one of our Premium Colors with no set-up fee.

Gloss:



SILVER METALLIC
70 GLOSS
T357-GR105



SILVER METALLIC
30 GLOSS
T353-GR06



DARK RED 90
GLOSS
P009-RD02



INTERNATIONAL
ORANGE 90
GLOSS
T009-OG26



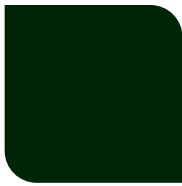
SAFETY ORANGE
90 GLOSS
T009-OG01



YELLOW 90
GLOSS
T009-YL14



YELLOW 90
GLOSS
T009-YL01



TRAFFIC GREEN
70 GLOSS
T007-GN16



GREEN 70 GLOSS
T007-GN13



GREEN 60 GLOSS
C006-GN03



BLUE 90 GLOSS
T009-BL01



DARK BLUE 80
GLOSS
T008-BL20



RAL 8028 TERRA
BROWN 90 GLOSS
C209-BR358

Hammer:



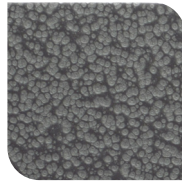
WHITE HAMMER
T013-WH09



BEIGE HAMMER
T013-BG38



GREY HAMMER
C013-GR08



SILVER
HAMMERTONE
T064-GR05



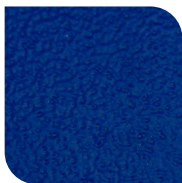
BLACK HAMMER
T013-BK62



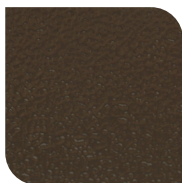
RED HAMMER
T013-RD15



GREEN HAMMER
T013-GN220



BLUE HAMMER
T013-BL468



BRONZE HAMMER
T012-BR161

Texture:



WHITE TEXTURE
C031-WH120



FLINT GRAY
TEXTURE
T243-GR522



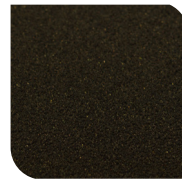
BLACK TEXTURE
C241-BK109



RED TEXTURE
T241-RD129

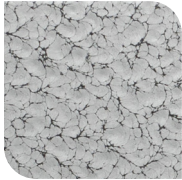


BLUE TEXTURE
C241-BL544

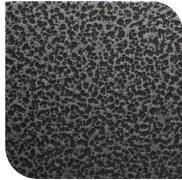


OIL RUBBED
BRONZE TEXTURE
T291-BR251

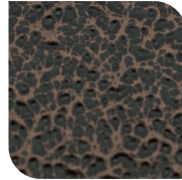
Vein:



BLACK/WHITE
VEIN
T075-WH34



SILVER VEIN
T375-BK26



COPPER VEIN
EXTERIOR
T075-BK211



GOLD VEIN
T375-BK10



COPPER VEIN
T375-BK07

